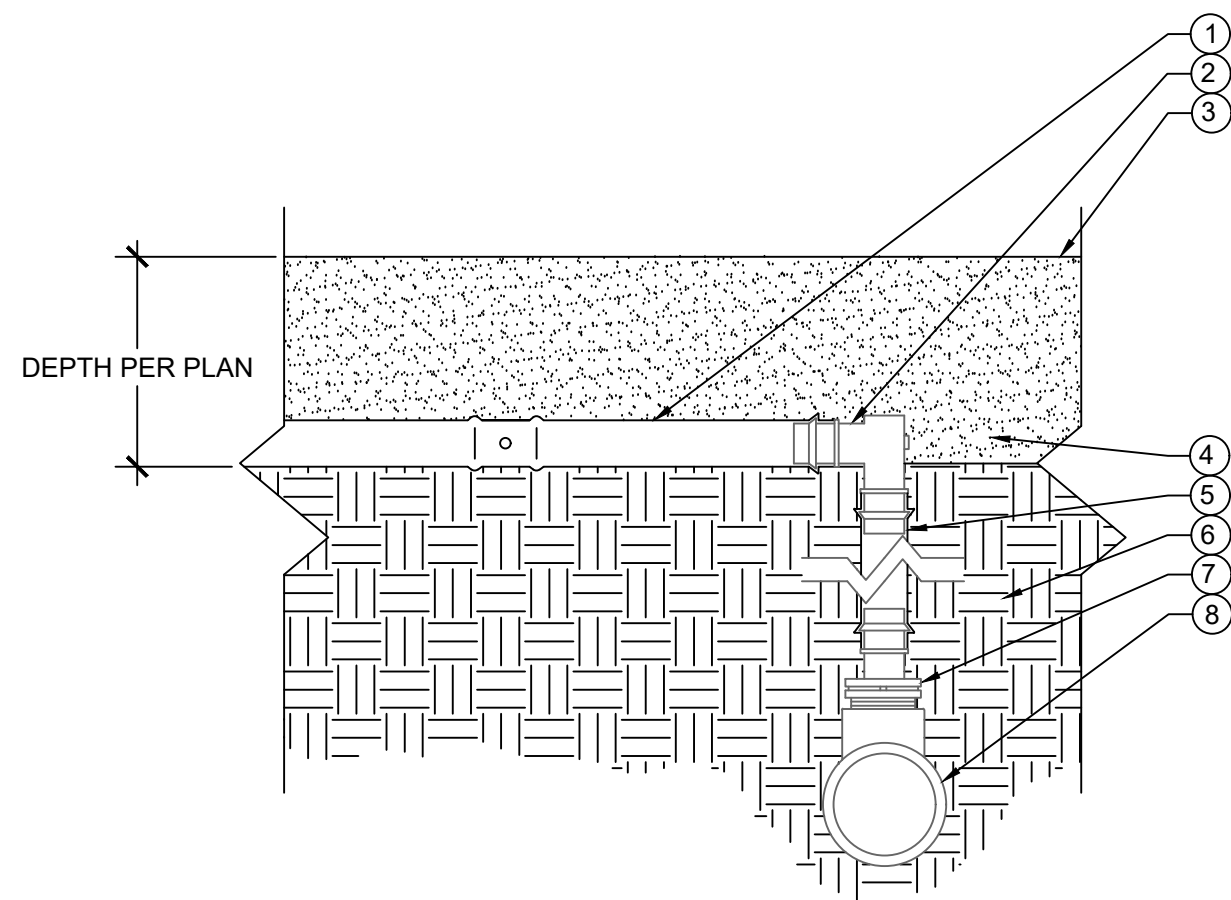


1 DRIP CONTROL ZONE KIT WITH ISOLATION VALVE

NOT TO SCALE

LEGEND

- 1) REMOTE CONTROL VALVE WITH FILTER REGULATOR
- 2) IRRIGATION VALVE BOX: HEAT STAMP LID WITH "RCV" IN 2" LETTERS
- 3) WATERPROOF CONNECTORS (2)
- 4) 18"-24" COILED WIRE TO CONTROLLER
- 5) FINISH GRADE AT ADJACENT SURFACE (TURF OR MULCH)
- 6) SCH. 80 CLOSE NIPPLE, MATCH SIZE TO VALVE
- 7) PVC ADAPTOR SLIP X FPT
- 8) ISOLATION VALVE, SIZE AND TYPE PER PLAN
- 9) BRICK SUPPORTS (4)
- 10) FILTER FABRIC - WRAP TWICE AROUND BRICK SUPPORTS
- 11) 3/4" WASHED GRAVEL - 4" MIN. DEPTH
- 12) IRRIGATION LATERAL
- 13) MAINLINE LATERAL AND FITTINGS

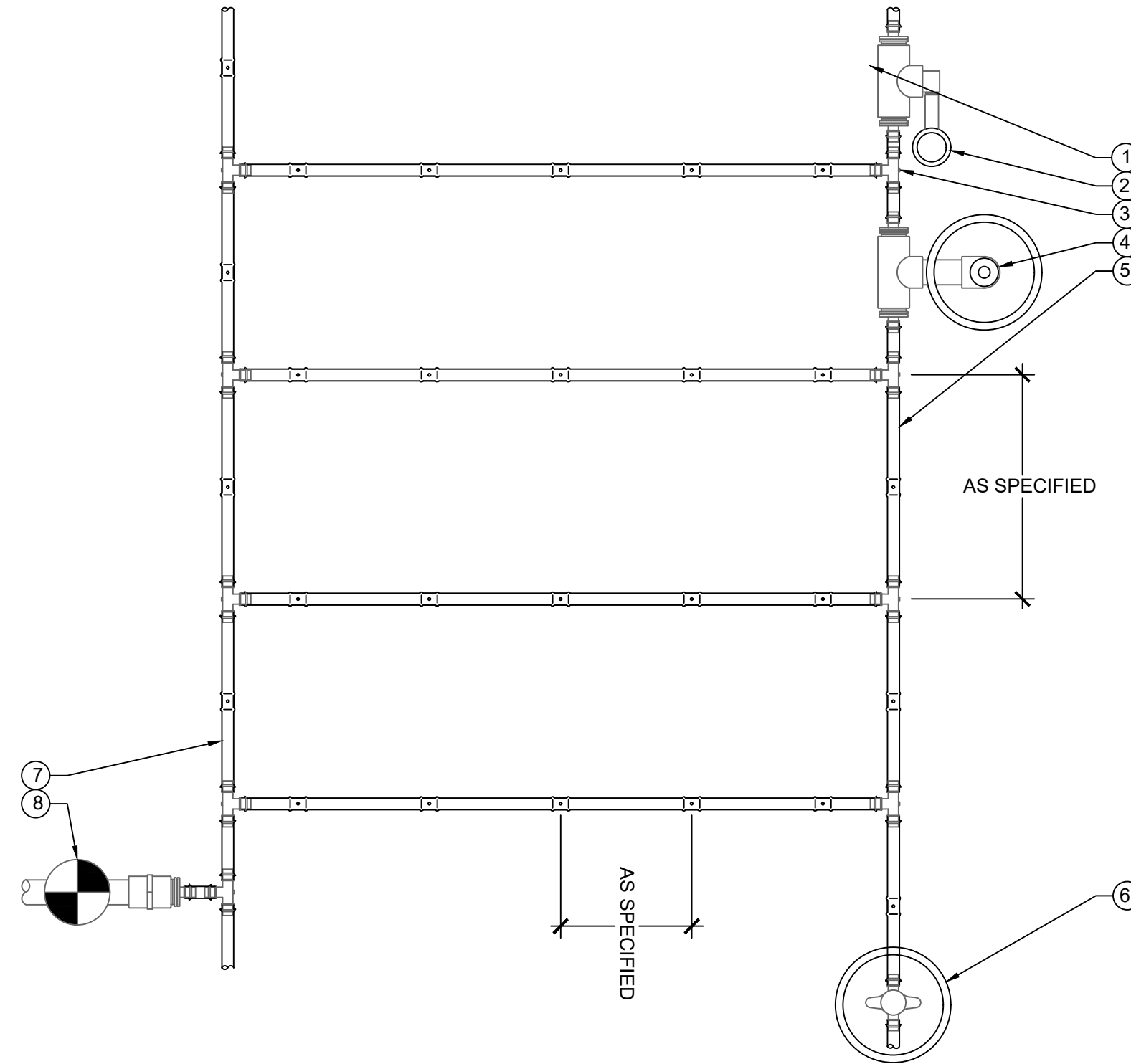


3 DRIPLINE - CONNECTION WITH DRIPLINE AND ELBOW

NOT TO SCALE

LEGEND:

- 1) DRIPLINE PER PLAN
- 2) LOC FITTING
- 3) FINISHED GRADE
- 4) MULCH (AS SPECIFIED)
- 5) DRIPLINE RISER - LENGTH AS REQUIRED
- 6) SOIL
- 7) LOC FITTING
- 8) PVC SUPPLY HEADER - SIZE PER PLAN



2 TYPICAL DRIPLINE LAYOUT

NOT TO SCALE

LEGEND:

- 1) LANDSCAPE DRIPLINE PER PLAN
- 2) ECO-INDICATOR ON SWING ARM
- 3) PLD OR PLD-LOC FITTINGS TYP.
- 4) AIR RELIEF VALVE IN VALVE BOX
- 5) PLD TUBING EXHAUST HEADER
- 6) FLUSH POINT (PLD-BV) IN SUBTERRANEAN BOX PER PLAN
- 7) PLD TUBING SUPPLY HEADER
- 8) DRIP CONTROL ZONE KIT PER PLAN

NOTES
AIR RELIEF VALVE (PLD-AVR) INSTALLED IN VALVE BOX AT OPTIMAL HIGHEST POINT FROM

CONTROL ZONE KIT. MULTIPLE AIR RELIEF VALVES MAY BE NEEDED TO ACCOMMODATE DIFFERENCES IN GRADE.

ECO-INDICATOR TO BE INSTALLED AT OPTIMAL FURTHEST POINT FROM CONTROL ZONE KIT IN CLEAR VIEW WHEN POPPED UP.

FLUSH POINT TO BE INSTALLED AT OPTIMAL FURTHEST POINT FROM CONTROL ZONE KIT TO ALLOW FOR MAXIMUM DEBRIS FLUSH IN SYSTEM.

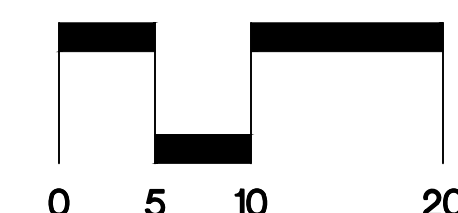
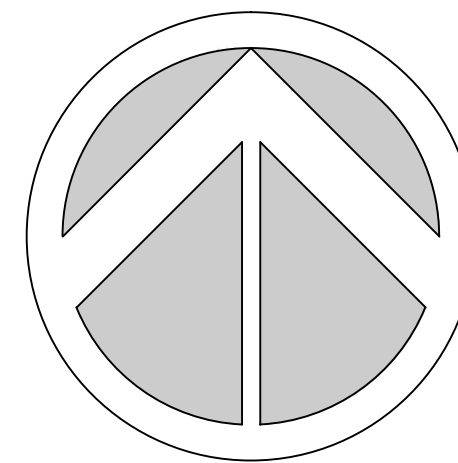


JESSAMINE
DESIGN BUILD
5427 OAK TERRACE DRIVE
ORLANDO, FL 32839
(508) 736-6897

THE SATORI
4211 N FEDERAL HIGHWAY
POMPANO BEACH, FL



Know what's below.
Call before you dig.



SCALE: 1" = 10'

Sheet Title
DRIP
IRRIGATION
DETAILS

Revision Dates

Date
12/16/2025

Sheet Number
IR-5

Seal

STEPHEN M PECCIA, PLA
LA 6667289